

# ANNUAL REPORT 2025



Evangelical  
Lutheran Church  
in America





## A MESSAGE FROM PRESIDING BISHOP YEHIEL CURRY

Dear friends in Christ,

As Lutherans, we are set free to love our neighbors and seek justice. In Colossians 2, we read: "As you therefore have received Christ Jesus the Lord, continue to walk in him, rooted and built up in him and established in the faith, just as you were taught, abounding in thanksgiving" (6-7).

I am abounding in thankfulness for you, church. You are an integral part of this mission as we envision a world experiencing the difference God's grace and love in Christ make for all people and creation. The ministries of congregations including yours, our synods and the ELCA churchwide organization are all working together today and every day so more people may know the way of Jesus and discover community, justice and love. From providing food to people experiencing hunger, to helping train the next generation of leaders that will lead this church, your support is at work here at home and around the world.

Your generosity to each of the three expressions of the church — your congregation, your synod and the churchwide organization — has made it possible for us to do this work

together. Your financial resources, your time volunteering and accompanying others, and your voices are so valued.

As we look ahead to the coming year, I encourage you to continue to walk in Christ, remembering you are rooted and established in faith, and free to love and serve your neighbors. Thank you, church, for the ways you connect with and support our siblings across the ELCA and in our communities.

In Christ,



A handwritten signature in black ink, appearing to read 'Yehiel Curry'.

The Rev. Yehiel Curry  
Presiding Bishop  
Evangelical Lutheran  
Church in America

---

“As you therefore have received Christ Jesus the Lord, continue to walk in him, rooted and built up in him and established in the faith, just as you were taught, abounding in thanksgiving.”

—Colossians 2:6-7

---

# ANNUAL CONGREGATIONAL MEETING OPENING LITURGY

Recognizing that our faith is a living, busy, active and mighty thing, may the grace of our Lord Jesus Christ and the communion of the Holy Spirit be with each of you.

**And also with you.**

Teach us to love you with all our heart, soul, mind and strength.

**Receive our prayer, O God.**

Descend on our hearts, that we may love others in the ways Jesus loves us.

**Receive our prayer, O God.**

Empower us to be enthusiastic in pursuing your vision for our congregation.

**Receive our prayer, O God.**

Move us to engage issues in our community in Christlike ways, and to pursue deep and authentic relationships with those with whom we serve and partner.

**Receive our prayer, O God.**

Strengthen us to face the barriers we encounter in doing your work, learning to work with others amid disagreement.

**Receive our prayer, O God.**

Give us the ability to adapt to the cultural, economic and social changes that occur in the neighborhoods we serve.

**Receive our prayer, O God.**

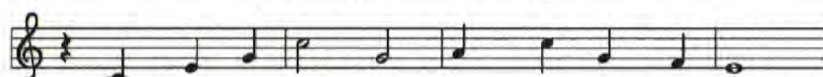
Guide us to be a healthy congregation that learns from its failures as well as its successes and offers wisdom to others.

**Receive our prayer, O God.**

As we strive to become the church that we proclaim to be, raise up leaders who focus on the gospel of freedom, forgiveness and reconciliation as given to us through God's indescribable act of love in the death and resurrection of Jesus Christ. Renew us daily in our baptism, that we may discover vitality in our relationships with you, each other and those we serve in the world.

**Amen.**

## Founded on Faith



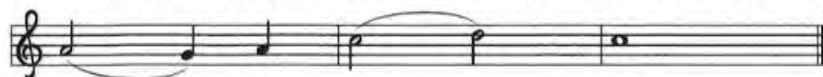
1 Found - ed on faith, the church— a - live by grace—  
2 Your cross, O Christ, re - news our life each day.  
3 E - quipped by prayer, we live the Spir - it's call.  
4 Grow - ing in grace for God's cre - at - ed earth,  
5 Found - ed on faith, called forth, em - pow'ed to serve,



pro - claims the gos - pel here and ev - 'ry place.  
Bap - tized in you, we learn and teach and pray.  
Em - pow'ed to serve with gifts, both great and small,  
we yearn for jus - tice, peace, and hu - man worth;  
we share God's end - less love with - out re - serve.



The word of God re - sounds through time and space:  
Fed by your love, with thank - ful hearts, we say:  
we bring the liv - ing hope of God to all.  
a world re - stored; a faith - ful, car - ing church.  
Then let us shout a - loud the liv - ing Word!



Al - le - lu - ia!

*All Creation Sings, 1048*

Text and music © 2017 Paul D. Weber, admin.  
Augsburg Fortress. Reproduced by permission.



CHRIST LUTHERAN CHURCH ANNUAL MEETING  
PRESTON, MINNESOTA  
January 25, 2026

**AGENDA**

❖ MEETING CALL TO ORDER

❖ WORSHIP

-GENEROSITY MOMENTS (Team and Auxiliary Reports)

❖ WORSHIP DISMISSAL

❖ REFRESHMENTS & RETURN TO SANCTUARY

❖ BUSINESS OF MEETING

-APPROVAL OF ANNUAL MEETING MINUTES FROM JANUARY 26, 2025

-APPROVAL OF PROPOSED CONSTITUTION CHANGES TO COMMITTEES FROM B.13.07.1—  
B.13.07.6

- a. Stewardship and Property – remove “terms of three years with membership alternating to maintain continuity” and change 5 voting members to 3 voting members
- b. Worship– A) change title to Worship *and music* B) remove “terms of three years with membership alternating to maintain continuity” and change 5 voting members to 3 voting members
- c. Evangelism- A) change title to *Social Outreach* B) remove “terms of three years with membership alternating to maintain continuity” and change 5 voting members to 3 voting members
- d. Youth and Education – A) combine these into 1 committee Title: ***Children Youth and Family Ministry Committee (CYF)*** B) Verbiage for in the constitution:
  - The committee shall consist of 5-7 members, including one council representative, and may include a parent of a birth-two-year-old, Sunday School representative (1 adult/1 youth), confirmation representative (1 adult/1 youth), one high school representative, and one young family representative, The Committee shall elect a Chair, Vice Chair, and Recording Secretary.
  - The Children, Youth and Family Ministry committee at CLC initiates and supports faith formation for children, youth, and families through catechism, building relationships, empowering youth leadership, living out service and generosity, encouraging Cross+Generational ministries and celebrating milestones.

-PROPOSED BUDGET

-ELECTIONS for 2026 Council/Audit Committee/Nominating Committee /Synod Delegates

❖ ADJOURNMENT

Dear Friends,

In 2 Timothy 1:7, the apostle Paul reminds Timothy, "God did not give us a spirit of cowardice but rather a spirit of power and of love and of self-discipline." This spirit - the Holy Spirit - weaves us into a community, the people of God of Christ Lutheran Church. With your faith and God-given gifts, our community shares in the hopes and promises we know through Christ's death on the cross.

What signs does God provide for us to recognize the Spirit is on the loose, working in, with and through the people of God of Christ Lutheran? Is it a phone call asking you to help a neighbor? Is it an announcement that the Food Shelf doesn't have eggs for clients? Is it your commitment to serving with worship or fellowship ministries; providing crafts or baked goods for the Craft and Bake Sale or supporting Children, Youth, and Family Ministries?

The 2025 Annual Report reminds us of the diverse missions you participated in and the impact they made locally, nationally and globally. Through words and pictures, highlights of the roles you take on to live your faith active in love are presented. What will be your role in the life of the church this coming year? As Paul said, "God gave you the spirit of power, love, and self-discipline". Thanks be to God for your commitment to your faith.

As we begin the new year, the world presents unforeseen challenges. Facing these challenges, we are anchored by God's grace, hope and love, and we are sustained by the presence of the Holy Spirit. We follow our mission to, "Love God, Serve People and Follow Jesus." This year, I invite you to find new ways to serve, share your gifts, and strengthen our community. Whether through volunteering, financial gifts, or reaching out to those in need, your active faith makes a real impact. Let's work together to bring hope and healing to our church, our country, and our world.

God needs you and Christ Lutheran needs you. Thank you for your faithfulness.

Peace,

Pastor Kris Hertsgaard Kincaid

Greetings From Your Council President

Your 2025 Church council began 2025 with much vigor and faith. We knew we had a vibrant congregation that was willing to go beyond our walls and serve the needs of not only our congregation but those in our surrounding community and the world at large.

Because at our roots: **We are here to love God, love people and follow Jesus.**

What a simple yet powerful statement.

As we look back and plan for forward progress, we understand that a strong church starts with strong leadership, and that our focus should be on renewing our collective energy, unifying our focus, holding one another accountable, and developing innovative new ideas. It is essential that the congregation holds the Church Council accountable for progress as much as the council looks for ideas and support from our membership because ideas are just that, ideas, without volunteers to help make them come alive.

This year, we continued to focus on our yearly events, such as Vacation Bible School, Trunk or Treat, Confirmation Celebration and Craft and Bake Sale. Our prayer is that these events demonstrate our genuine community. I want to thank all the volunteers who work tirelessly to make these events happen and ask you to continue to invite your friends and neighbors to them. These events are an excellent opportunity for those searching for a church home to get to know our greatest asset, our congregants.

As you read through the committee and pastoral reports, I hope you can understand, and hopefully have experienced, some of the different services that we have to serve our community through our programs and outreach efforts. To grow, not just maintain, our reach and impact we request everyone to also prayerfully consider the financial support side of our programs. We want our church to be able to continue our outreach and ministry support programs long term.

Lastly, I would like to share my hope for the congregation of Christ Lutheran. In the coming year, I pray that your priorities may honor your purpose, that decisions may foster innovation, and that you will encourage service and empower one another to honor God and elevate yourselves and others.

Blessings and grace to all,

Jennifer Pickett, Congregation and Church Council President

## **2025 Education Team Annual Report**

### **Sunday School Highlights**

- There are approximately 60 kids who participate
- Strong leadership team: Jenna Pederson, Cassie Keene, Megan Persons, & Margret Johnson
- Valentine's were made by the kids and distributed to CLC members
- Starting in the Fall of 2025, are 4 classrooms this year instead of 3, which is a change from recent years
- Using Spark curriculum for the first time in several years
- Had a really successful Christmas program, using a new script from the Spark content
- Assembled 40 birthday cake kits for the Preston Food Shelf during the Christmas Birthday Party for Jesus
- Parent and youth volunteers have been greatly appreciated!



### **Vacation Bible School Highlights**

- Held the first weekend in August
- About 15 kids participated over the 3 days
- Leadership team: Pastor Kris, Jessica Brandt, and Dena Mathison, Music: Sara Niemeyer
- Who is My Neighbor theme which focused on The Good Samaritan Bible story
- Participants and church members collected food and personal care items and delivered them to Preston Food Shelf



### **Other Education Highlights**

- Noisy offering is still a highlight of many children during the service and then they get to decide where the monies should be donated
- Frolic Class, for ages birth - 3 years old and their parents, is led by Shelby Ristau

Respectfully submitted,  
Dena Mathison



## Evangelism and Social Outreach Team Report for 2025

Over the past year, the Evangelism and Social Outreach efforts at Christ Lutheran Church have focused on recognizing and embracing the many opportunities God places before us to share His Word and extend Christ's love beyond our walls. As a congregation, we are uniquely positioned to be a welcoming presence in our community—one that reflects grace, compassion, and genuine hospitality. One way we continue to support involvement is through the "Things I Like to Do" survey, which allows members to identify how they would like to be involved at Christ Lutheran and support our ministry. New in 2025, a youth version is available for those high school students that have been confirmed; this is a great way for our young adults to become engaged in different aspects of the church and its ministry. Members who have not yet completed a survey, or who would like to update their selections, are encouraged to pick up a form outside Amanda's office and return it to the office or place it in the offering plate.



Lectoring



Greeting



Ushering

This past year was largely devoted to thoughtful preparation and continued engagement. Many existing groups have remained active, with the addition of a few new opportunities to reach others. What's on Wednesdays has provided a meaningful way to focus on engaging our high school youth and encouraging them to bring friends along to these gatherings and grow their involvement in the life of the church. Pastor Kris continues to offer care and connection by meeting regularly with home-bound members, those who are hospitalized, and individuals in local care facilities. She also remains part of the rotation for leading worship services at the Veterans' Home, Harmony Care Center, Park Lane, and Traditions. Members who feel called to participate in Evangelism and Social Outreach are encouraged to get involved by reaching out to Amanda in the church office, Pastor Kris, or any council member for more information.

Respectfully submitted by Amanda Heibel





## 2025 Worship & Music Committee Team Report

Team Members: Andy Bunge, Tami Christiansen, Traci Corson, Pastor Kris, Cari Ledin, Kari Mensink, Paul Schmidt

Altar Guild Representative: Mary Jane Glaser

Council Representative: Katie Marzolf-Harstad

Our team met quarterly in 2025 to assist in planning worship & music for CLC. We continue to offer weekly services both onsite and online. Two outdoor worship services were held including a "Blessing of the Animals" service. The Holden Evening Prayer Service shaped our Wednesday Lenten Services and a Blue Christmas Worship was held in December. Worship themes held throughout the year included: "Grounded" curriculum in the Fall and "The Power of Yes" during Advent.



We would like to extend a deep appreciation to Tami Christianson for her organ and piano accompaniment during worship. In addition to the organ, guitar and percussion instruments were used throughout the year to support our worship services. Special music also included the cross-generational bell choir, prelude music by piano students, and several soloists and duets.

The Altar Guild continues to prepare for our sanctuary for each season and ready communion supplies. Communion is held on the 1<sup>st</sup> & 3<sup>rd</sup> Sunday of each month and is served in a continuous style.

Respectfully submitted,  
Katie Marzolf-Harstad





## PROPERTY TEAM REPORT FOR 2025

Property Team: Bruce Hoff, Rick Grooters, Joel Mielke, Kevin Ostern, Jonathan Wood

- One of the first items we had to address was the repair of the organ. That took place during the month of February. The processor needed to be removed and transported to Levsen Organ Company Plant repaired and reprogrammed. Then returned and installed at the church. They reprogrammed the stops and the combination action as well. Labor to install and test was \$3,500.
- Repaired the northwest outside entry door into the downstairs fellowship hall. The locking mechanism was not working properly. This took about 5 months to get completed since parts were hard to obtain. Work was completed by Bowman Door Company.
- Replaced fluorescent tubes with new LED lights in the fellowship hall, kitchen area, Secretary's Office, Pastor's Office and north conference room. More will be done as needed. A big thank you to Kevin Ostern and Rick Grooters for their time spent on this project.
- Hebl Cleaning & Restoration was contracted to shampoo/extract the carpet in designated areas. This was completed on May 5<sup>th</sup>.
- We had some water leakage from the spring snow storm in April. Jonathan Wood got up on the roof and checked the flashing. He took some picture and there were some issues that needed to be addressed.
- The ramp cement (entryway) was sealed by Joel Mielke and Andy Bunge in August.
- In September, we had a group of volunteers help with trimming the trees outside the church. They did an amazing job. Volunteers were Rick Grooters, Joel & Barb Mielke, Hoogie Hanson, Matt Quanrud, Kevin Ostern and Dean Solberg. Dean provided the equipment.
- Jerry Armstrong was contacted to clean up the leaves on the grounds and that was completed the last week of October.
- Arlene Bakalyar donated a picture her father painted back in the 1930's that now hangs in the Heritage Room.
- Plugged toilet in women's bathroom downstairs was fixed by Al Larson & Sons in December.
- Our HVAC System is a major concern of the property committee. We continue to work on our concerns with the HVAC System, it is a slow process, but we are not in any rush to get things done right now. We want to make sure we make the necessary repairs and be frugal with our finances.
- There was a recall on some parts of the boiler system. VIS Plumbing and Heating has completed the repairs on the boilers. They also repacked the valves on the Taco pump. This took place in December.
- The Property Team worked throughout the year on developing a Preventative Maintenance/Routine Duties Calendar.



Respectfully submitted,  
Bruce Hoff



## 2025 Stewardship Committee Report

The theme for stewardship was Generosity. Not only from us but to us. Generosity spoke to encourage our members to give generously of their time, talents and money to Christ Lutheran so to allow us to operate our programs and support local, regional and national causes.

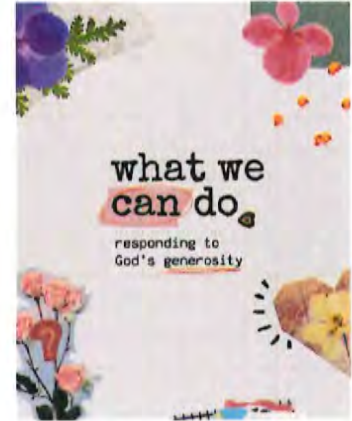
We invited testimony from our members to share moments where they experienced Gods and Christ Lutherans Generosity and where they were Generous in their faith journey.

Our campaign was to raise awareness to where are blessings flow from and how we should respond in return as an act of gratitude toward our God for our blessings.

Our committee understands the challenges all ages face in the daily dispensing of one's time, talents and monies. Ultimately it rests in where we place our priorities and what we worship daily.

We are hopeful that our members, at all giving levels, will desire to increase their support for Christ Lutherans continued operation and mission of Christian based service for 2026 and beyond.

Andrew Bunge  
Stewardship chairperson





## Youth Committee Report for 2025

Families were invited to attend Dinner Church with their confirmands. On these Wednesdays, a meal is offered. There is an activity and communion for parents and youth to connect and grow in faith. These will be continued through the upcoming year.

Lent Season: Mentors and confirmands met 6 of 8 Wednesdays during lent. Soup and sandwiches were provided by parents of confirmands and members of the church prior to the service. A free will donation was collected.

High School Senior Recognition took place on May 18. A total of 12 students were recognized and provided blankets during the service. During the weeks leading up to this Sunday, the seniors were recognized on Facebook with pictures and information about the post-graduate plans. Thanks to everyone who made the blankets that were gifted to the seniors.

There were 11 Good Earth Village scholarships provided for the summer of 2025.

Pastor Kris went as co-lead with 9 youth on a Boundary Waters canoe trip August 5-9. It was well received, and they are planning another trip in 2026.

Summer Youth Events: games and devotions on July 16 and August 20. Plan is to work for increased number of youth joining the events during the summer of 2026. However, it was a good start to the program.

10<sup>th</sup> grade retreat was held September 24 with Affirmation of Baptism on October 14<sup>th</sup>. There was a total of 7 students confirmed. Thank you to the parents, confirmation leaders, and mentors for your guidance and support of these students.





Confirmation started with an orientation for parents and youth on September 17. The 7<sup>th</sup> grade students were provided study bibles during the church service on September 29; these are used during confirmation class to coordinate with the lessons. We thank the confirmation leaders for their service: 9<sup>th</sup>: Christy Gildner and Amanda Dempewolf; 8<sup>th</sup>: Cari Ledin; 7<sup>th</sup>: Jade Grabau. Confirmation topic this year is Ancestors of the Old Testament.

Care package party for 9-12<sup>th</sup> graders was held on September 28 to send to the 2025 graduates.

HS Hangout (2024-2025) and WOW Wednesday's (2025-2026) are offered to 10-12 grade students once monthly on a Wednesday; Pastor Kris leads this.

The third annual Trunk or Treat was on Sunday, October 26. The youth assisted in providing games and prizes to the children that attended. Thank you to all of those that volunteered as it was a great turn-out again this year.

Grades 7-12 gathered on October 22 for Halloween Fun. They painted pumpkins and completed a devotion. Individuals could vote for pumpkins and a total of \$222.50 was raised for LWR in Alaska.

"HS Hangout" was offered in the spring of 2025 for 10-12 grade students. This was changed to "Doughnuts and Devotions:" starting Sunday, November 2 from 10-11. This was well attended and regarded by 7-12 graders. Plan is to continue this on the first Sunday of the month in 2026 for 7-12 graders from 10-11.

"Feed My Starving Children:" this was offered to families of Sunday School and Confirmation aged students. 2 families from Christ Lutheran joined Highland Prairie Lutheran on November 22.

Respectfully submitted,  
Melissa Severson

## Christ Lutheran Altar Guild Annual Report 2025

The Christ Lutheran Altar Guild is made up of 40 women, who give their time and talent to serve God by maintaining the housekeeping and decoration of God's house. The members prepare for changes in the liturgical season, and for all services held in the sanctuary including those of Holy Communion, baptism, funerals, confirmation, and festivals of the church year. The work of the Altar Guild is to ensure that our sanctuary reflects the holiness and joy we create together in our worship. Specifically flowers were purchased for Easter, Christmas, and confirmation. We assisted in the cost of Bibles for the children and postage for mailing care packages to college students. We purchased a new funeral banner and another acolyte gown. Our income source is from serving coffee on the first and third Sundays or memorials. We meet two to three times a year. Monthly duties are communicated by email. Our financial report is as follows:

<b>December 2024 Balance -</b>	<b>717.64</b>
<b>Disbursements</b>	
Preston Floral-flowers for Easter,	
Christmas, palms, confirmation -	1,269.00
Karen Trende - acolyte robe -	176.10
Mary Glaser - funeral banner -	546.05
CLC - postage for college	
student care packages -	200.00
CLC - children's Bibles -	200.00
WOCL - benevolence -	300.00
<b>Total disbursements -</b>	<b>2,691.15</b>
<b>Receipts</b>	
Easter flowers purchased-	1,080.00
Memorials-	927.72
Coffee/donations -	1,198.55
Sale of metal stands-	100.00
<b>Total receipts -</b>	<b>3,306.27</b>
<b>December 2025 Balance -</b>	<b>1,332.76</b>



We give thanks for the ministry of these women, and the leadership of Pastor Kris and the council as they guide us along this worship journey. New members are always welcome.

Respectfully submitted by,  
Mary Glaser and Karen Trende, co-chairs



## Women of Christ Lutheran Committee 2025

The Women of Christ Lutheran (WOCL) Committee was established in 2023 to revitalize and unify our women's ministries following the conclusion of the WELCA (Women of the Evangelical Lutheran Church) board. This committee brings together representatives from each group under the Women of Christ Lutheran umbrella: Women's Fellowship (Joyce Hellickson), Altar Guild (Mary Glaser), and Christ's Crafters (Mary Zimmerman). (Note: Altar Guild continues to manage its own checking account.) The committee's mission is to thoughtfully oversee and allocate funds, balancing the needs of each group with those of our local community and global partners.

In 2025, Janet Erdman served as Chair, Sue Grooters as Vice Chair, and Darla Ebner as Treasurer, with all other members continuing in their current roles.

In October, we sent our annual fall benevolence drive letter to all women of Christ Lutheran Church (CLC). Thanks to the generosity of our community, we received \$4,845 — a wonderful response. The committee will meet in January to prepare and approve the 2026 budget, ensuring our resources are used to make a meaningful impact.

<b>Beginning Balance: \$6,435.44</b>			
<b>EXPENSES:</b>		<b>EXPENSES (continued):</b>	
Projects/Benevolence:		Jeremiah Project, Rochester	\$275.00
<b><u>WOCL Fellowship Offering:</u></b>		The Landing (homeless shelter, Rochester)	\$275.00
Kitchen water pitchers	\$187.99	Lutheran Campus Center	\$300.00
CLC Ride Program, gas gift cards	\$100.00	Lutheran Disaster Response	\$300.00
CLC Children's Bibles	\$215.00	MN Adult Teen Challenge	\$300.00
Bethlehem Inn of Waseca	\$150.00	Postage, fall benevolence letters	\$78.00
Preston Food Shelf	\$450.00	Preston Food Shelf	\$400.00
Women's Shelter/Support Center	\$350.00	SEMCAC, Christmas in Fillmore Co.	\$300.00
SEMCAC, Christmas in Fillmore Co.	\$100.00	Women's Shelter/Support Center	\$150.00
		Cards	\$142.35
<b><u>WOCL Projects/Benevolence:</u></b>		<b>Total Expenses</b>	<b>\$5,803.37</b>
Bibles	\$150.00		
Christ Crafters	\$23.29	<b>REVENUE:</b>	
CLC (radio broadcast)	\$130.00	2025 Fall Benevolence Letter	\$4,845.00
CLC Youth (confirmands' project)	\$250.00	WOCL Fellowship Offering (2024 carryover: \$214.54)	\$1,400.00
CLC Youth (meal assistance)	\$200.00	Cards	\$174.50
Fleece	\$476.74	Donations/Memorials	\$610.00
Good Earth Village	\$500.00	<b>Total Revenue</b>	<b>\$7,029.50</b>
<b>Ending Balance: \$7,661.57</b>			

*Submitted by Janet Erdman (Chair), Sue Grooters (Vice Chair), and Darla Ebner (Treasurer)*

## **Women's Fellowship 2025**

Join the Women's Fellowship (formerly Deborah Circle) for spiritually centered discussions, shared laughter, and mutual support. This group is a welcoming space to connect through prayer, personal stories, and visiting experts on various current interests. Meetings are held on the fourth Wednesday of the month at 6:30 p.m. (except in July and December). During Lent, meetings may be moved to a different night.

Throughout the year, our group engaged in a diverse range of meaningful discussions and studies, including:

- Exploring the intersection of money and faith through a Gather study.
- Deepening our understanding of relationships with insights from Gather magazine.
- Celebrating and strengthening women's friendships.
- Addressing important social issues such as racism, white supremacy, and white privilege.
- Discovering and nurturing spiritual gifts in a dedicated Gather study.
- Reflecting on compassion and uncertainty in the "After Certainty: Compassion" Gather study.
- Examining the factors behind declining church attendance and its impact on our community.

These topics inspired growth and strengthened our friendships.

This year, our group welcomed two inspiring guests who enriched our fellowship and learning:

- We were honored to host an advocate from the Fillmore County Women's Shelter, who provided valuable insights into the realities of domestic violence and shared information about the essential services available to those in need within our community.
- Nancy Hengeveld joined us for a thoughtful discussion about her book, *Petrichor*, offering personal reflections and fostering meaningful conversation among our members.

The generous monthly offerings collected totaled \$1400. Current balance is \$62.55. The group designated funds to:

- Women's Shelter \$350
- Food Shelf \$450
- Children's Bibles \$215
- SEMCAC, Christmas in Fillmore County \$100
- SE MN Synod Convention Project, Love Offering (Bethlehem Inn of Waseca, a short-term transitional home that provides a living environment for women and children in transition) \$150.
- Five \$20 gas gift cards for Christ Lutheran's Ride Program.
- Kitchen items (carryover from 2024) \$187.99

The group will begin next year with the book *The Gift of Years: Growing Older Gracefully*. All women of the church are invited!

Submitted by Janet Erdman



## Christ's Crafters - 2025

Christ's Crafters continue to meet at 1:00 PM on the first and third Thursday of the month in the Fellowship Hall. We average about 10 people at each session. We work on projects and mission quilts for a couple of hours. We finish out the afternoon with coffee and fellowship. We welcome anyone that would like to join us (no skills required!). We are always looking for new members – and project ideas.

Many of the projects we do are donated to the church's annual Craft and Bake Sale. In addition to items for the Craft and Bake sale, we also do other projects throughout the year.

### 2025 Projects:

1. We assembled 15 Easter cards/treat bags for Christ Lutheran Church members that reside in assisted living and/or care centers.
2. We made 12 fleece blankets that were presented to the graduating seniors of our congregation.
3. Several members make baby quilts that are given at the time of baptism and prayer shawls which are available in the Narthex.
4. We continue to assemble items to Mayo Clinic St. Mary's Hospital through their Volunteer Program. Donations this year included four prayer shawls and 27 pediatric surgical caps.
5. Christ's Crafters also assembled and donated 140 Kleenex covers made from patriotic fabric to the Preston Veterans Cemetery. We will continue to provide them for the Welcome Baskets given to new residents at the Preston Veterans Home as needed.
6. In September we dedicated 34 mission quilts. Five of them were donated to The Landing in Rochester. The remaining quilts were delivered to Lutheran World Relief in the Twin Cities by Barb Mielke.



Lutheran World Relief quilts

Christ's Crafters members donate many of the supplies for items made by this group. If you have items to donate, they can be left in the quilt room across from the kitchen. Monetary donations to Christ's Crafters can be made to help purchase needed supplies. Memorials can also be designated for this group. Checks should be made payable to "Women of Christ Lutheran" and can be left in the church office (Attention: Darla Ebner).

Submitted by Diane Johnson



Senior quilts



Christ Lutheran Church continues to collect infant items for the local chapter of **Bundles of Love** in Chatfield. In 2025, we donated 349 items to them (including fabric, ribbon, yarn, etc.). Items can be left in the designated box in the church office anytime. (They can be either new or gently used.) A list of requested items can be found on the bulletin board near the church office. Note: The majority of bundles assembled in Chatfield are donated to families within Fillmore County.

Bundles of Love is a Minnesota-based non-profit organization that provides families experiencing poverty with a handmade "Bundle of Love" when their newborns are born. Bundles are packed with handcrafted clothing, bedding, and baby care items. Additional information can be found on their website (<https://www.bundlesoflove.org>).



## 2025 Craft & Bake Sale

Held on Saturday, December 6, 2025, our annual Craft and Bake Sale provides vital support for our congregation's needs and mission work—locally, regionally, and globally—while also offering a wonderful opportunity for fellowship and fun.

Thanks to the tireless dedication of our planning committee and the incredible involvement of our entire church community, the 2025 event was a tremendous success. This rewarding, community-focused gathering proudly netted over \$20,000 for our causes.

Our congregation demonstrated impressive talent, as evident in the diverse array of food, crafts, and porch pots showcased in the Fellowship Hall during the event. Many volunteers played a key role in making the sale a success.



On a Saturday in October, roughly 40 dozen lefse were produced, with 9 dozen sold during the two Sundays leading up to Thanksgiving. Linda Wolfe and Joyce Every coordinated the lefse preparation, while Lynn Benson and Elsa Bye oversaw the production of the flatbread.



For the third consecutive year, the raffle proved extremely popular, with every ticket sold. This year's prizes included a holiday quilt created and donated by Mary Zimmerman, a Blackstone grill (courtesy of a Thrivent grant), fused glass art contributed by Barb and Joel Mielke, an infant sleigh decorated by Sue Grooters, and a custom walleye rod handcrafted and donated by Hoogie Hanson.

Porch pots were again successful, thanks to the leadership of Sue Grooters and others who assisted in their creation.

A silent auction was introduced this year, featuring several unique items: John Carlin donated a sculpture; Joel and Barb Mielke contributed a six-person lutefisk dinner and provided a live-edge walnut bench; a vintage crazy quilt was available; and Pam Mensink donated and decorated a pig porch pot.

The Craft and Bake Sale Committee assigned Joel Mielke the task of constructing a pegboard display for hanging items and wreaths, which he completed successfully. We extend our appreciation to Joel for his contribution.

Three Thrivent grants of \$250 each were used for purchasing supplies and raffle items, while a \$100 POET grant helped support the Gnome Café. Shoppers started their day with coffee and treats and could enjoy BBQ pork sandwiches served at the café. Pam Mensink graciously donated the pork, which Erik Topness cooked. Free craft activities were available for children while their guardians shopped.

We extend our sincere gratitude to all individuals who contributed to the event. While it is not possible to acknowledge each participant individually due to the extensive involvement, every effort is deeply appreciated. Many supported the occasion by selling and purchasing raffle tickets, assisting with setup and promotion, and volunteering on the day of the event. We also wish to thank both youth and adults for their roles in arranging tables and chairs, transporting porch pots, and assisting with the Gnome Cafe. Further appreciation goes to those who donated baked goods, crafts, or financial resources. The collective efforts of all participants greatly enhanced our community spirit and pride, as was clear when attendees gathered in anticipation before the event's commencement.

A total of \$19,500 was presented to the Church Council, which will designate specific recipients for these funds in January. We sincerely thank everyone who made this achievement possible. The collaborative spirit and generosity displayed by members of Christ Lutheran are truly commendable.

2025 Craft & Bake Sale Committee Members:

Gail Bunge, Janet Erdman, Teresa Hoff, Alison Leathers, Kayla Peterson, Susan Pikula, Lori Winkels

*Submitted by Janet Erdman*



## **2025 Christ Lutheran Church Service Groups**

In 2025, Christ Lutheran Church's twelve service groups supported funerals and events, offering hospitality and assistance. The church community highly values the time and dedication of its volunteers.

Carol Solberg, Mary Zimmerman, and Janet Erdman lead the service groups. In October, the committee met to review group balance and leadership structures and solicited valuable input from current monthly chairs. The committee is actively seeking chairpersons for the upcoming October service group. Please direct any inquiries or requests regarding service group involvement to this group for assistance.

The post-COVID changes have been effective for the service groups, so only minimal updates were needed this year. The 2026 service group booklets will be distributed in January.

*Submitted by Janet Erdman*

## MEMBERSHIP REPORT 2025

(Jan. 1, 2025-December 31, 2025)

	<u>2023</u>	<u>2024</u>	<u>2025</u>
Number of Households	269	267	262
All members who are baptized	661	680	686
All members who are confirmed	520	524	518

### **Additions**

Baptisms	11	4	12
New members:	3	31	2
baptized/confirmed	3;2	31;17	2;2

### **Losses**

Deaths (members)	8	13	5
Transfers out	3	3	3

### **Worship Activity**

Average Sunday Worship Attendance	101	110	111
Average Midweek Lenten Attendance	48	55	46
Easter Worship Attendance	352	300	317
Christmas Eve Worship Attendance	378	445	365

Affirmation of Faith (Confirmation)	10	3	7
Received First Communion	7	9	3
Christ Kids enrollment (pre-K - 6th grade)	56	57	53
Confirmation enrollment (7-9 grade)	17	19	22
Bibles given to students	20	38	44
Baptisms	11	4	12
Funerals	10	14	8
Weddings	0	0	0

# of Households that did not contribute in 2025                      76

submitted by  
Amanda Means, office admin.



5:35 PM

01/14/26

Cash Basis

**Christ Lutheran Church**  
**Rev vs Exp - Budget vs. Actual**  
 January through December 2025

	Jan - Dec 25	Budget	\$ Over Budget	% of Budget
<b>Ordinary Income/Expense</b>				
<b>Income</b>				
Contributions Income	196,304.16	209,500.00	-13,195.84	93.7%
Interest Income	237.82	275.00	-37.18	86.5%
Miscellaneous Income	44,033.19	41,600.00	2,433.19	105.8%
Program Fees	1,542.00	2,207.00	-665.00	69.9%
Restricted Contributions	3,795.75	3,000.00	795.75	126.5%
<b>Total Income</b>	<b>245,912.92</b>	<b>256,582.00</b>	<b>-10,669.08</b>	<b>95.8%</b>
<b>Expense</b>				
Benevolence	39,450.55	17,750.00	21,700.55	222.3%
Operations	61,434.47	59,750.00	1,684.47	102.8%
Payroll Expenses	60.00			
Programs	18,920.82	12,895.00	6,025.82	146.7%
Salaries	158,018.31	163,187.00	-5,168.69	96.8%
<b>Total Expense</b>	<b>277,884.15</b>	<b>253,582.00</b>	<b>24,302.15</b>	<b>109.6%</b>
<b>Net Ordinary Income</b>	<b>-31,971.23</b>	<b>3,000.00</b>	<b>-34,971.23</b>	<b>-1,065.7%</b>
<b>Other Income/Expense</b>				
Other Expense				
WoCL Expenses	4,891.91	3,000.00	1,891.91	163.1%
<b>Total Other Expense</b>	<b>4,891.91</b>	<b>3,000.00</b>	<b>1,891.91</b>	<b>163.1%</b>
<b>Net Other Income</b>	<b>-4,891.91</b>	<b>-3,000.00</b>	<b>-1,891.91</b>	<b>163.1%</b>
<b>Net Income</b>	<b>-36,863.14</b>	<b>0.00</b>	<b>-36,863.14</b>	<b>100.0%</b>

5:29 PM  
01/14/26  
Cash Basis

# Christ Lutheran Church

## Revenue vs Expense

January through December 2025

	Jan - Dec 25	Jan - Dec 24
<b>Ordinary Income/Expense</b>		
<b>Income</b>		
<b>Contributions Income</b>		
Mighty Cause Foundation	3,480.00	3,475.00
Regular Offering	161,197.85	163,169.95
Simply & Tithely Giving	31,125.07	32,332.99
Sunday School Offerings	501.24	200.00
<b>Total Contributions Income</b>	<b>196,304.16</b>	<b>199,177.94</b>
<b>Interest Income</b>		
Interest Income Altar Guild	0.30	0.04
Interest Income Capital Account	186.47	217.13
Interest Income General Account	13.64	20.03
Interest Income Spec Gifts	37.41	14.64
<b>Total Interest Income</b>	<b>237.82</b>	<b>251.84</b>
<b>Miscellaneous Income</b>		
Altar Guild Receipts	2,982.69	1,675.35
CYF (Child, Youth, Family) Rece	2,145.25	3,252.00
Special Gifts Account Receipts		
Church Maintenance Receipts	0.00	1,755.00
Growing Hope Globally Receipts	3,170.75	1,488.80
Memorial Receipts	3,340.00	95,095.72
Organ Fund Receipts	40.00	0.00
Radio Receipts	670.00	1,615.00
Thrivent Choice Allocation	3,007.00	3,545.00
Worship Receipts	400.00	0.00
Special Gifts Account Receipts - Other	0.00	175.00
<b>Total Special Gifts Account Receipts</b>	<b>10,627.75</b>	<b>103,674.52</b>
<b>Women of CLC Receipts</b>		
Card Sales	150.00	0.00
Craft & Bake Sale	21,027.50	20,725.00
Crafters	175.00	0.00
WOCL Fall Benevelence	4,695.00	0.00
WOCL Memorials	160.00	0.00
WOCL Offerings	1,849.50	0.00
Women of CLC Receipts - Other	0.00	5,485.00
<b>Total Women of CLC Receipts</b>	<b>28,057.00</b>	<b>26,210.00</b>
<b>Miscellaneous Income - Other</b>	<b>220.50</b>	<b>115.00</b>
<b>Total Miscellaneous Income</b>	<b>44,033.19</b>	<b>134,926.87</b>
<b>Program Fees</b>		
Church Rental	842.00	0.00
Funerals	700.00	2,450.00
<b>Total Program Fees</b>	<b>1,542.00</b>	<b>2,450.00</b>
<b>Restricted Contributions</b>		
Food Shelf Contributions	1,064.75	0.00
Good Earth Village Receipts	0.00	53.75
Lutheran Campus Center Restrict	277.00	0.00
Pastor's Discretionary Fund	1,000.00	0.00
Teen Challenge	954.00	0.00
Restricted Contributions - Other	500.00	3,750.00
<b>Total Restricted Contributions</b>	<b>3,795.75</b>	<b>3,803.75</b>
<b>Total Income</b>	<b>245,912.92</b>	<b>340,610.40</b>
<b>Expense</b>		
<b>Benevolence</b>		
Campus Ministry/Luther Seminary	827.00	300.00
Disaster Relief/World Hunger	4,268.79	2,285.14



5:29 PM  
01/14/26  
Cash Basis

# Christ Lutheran Church

## Revenue vs Expense

January through December 2025

	Jan - Dec 25	Jan - Dec 24
Donations	2,179.00	1,571.83
ELCA Admin Pledge	6,750.00	7,500.00
Food Shelf	5,527.17	1,699.23
Good Earth Village	2,064.42	1,500.00
Growing Hope Globally Benevelen	3,170.00	0.00
Local/Gobal Missions	12,053.75	2,350.00
Pastoral Discretionary Fund	1,081.58	714.50
Thrivent Designated Payments	1,528.84	0.00
<b>Total Benevolence</b>	<b>39,450.55</b>	<b>17,920.70</b>
<b>Operations</b>		
Altar Guild Expenses	2,691.15	1,708.45
Contract Services	1,485.00	0.00
Fuel-Heating	5,733.70	6,142.35
Insurance-Building & Liability	7,954.25	7,473.92
Interest Expense	49.30	21.25
Kitchen/Fellowship	1,117.48	237.03
Office	9,920.25	11,532.92
Postage	2,122.76	2,197.00
<b>Property</b>		
Capital Account Expenditures		
Boiler Expense	2,618.00	3,594.49
Capital Account Expenditures - Other	0.00	1,260.00
<b>Total Capital Account Expenditures</b>	<b>2,618.00</b>	<b>4,854.49</b>
<b>Property - Other</b>	<b>6,453.02</b>	<b>14,504.85</b>
<b>Total Property</b>	<b>9,071.02</b>	<b>19,359.34</b>
Synod Assembly/Conference	1,745.00	844.46
Telephone/Internet/Website	3,729.64	4,335.46
Utilities	15,814.92	12,553.72
Operations - Other	0.00	359.45
<b>Total Operations</b>	<b>61,434.47</b>	<b>66,765.35</b>
<b>Payroll Expenses</b>	<b>60.00</b>	<b>0.00</b>
<b>Programs</b>		
CYF - Education	872.97	2,992.69
Miscellaneous	4,205.49	1,791.23
Music Supplies/Maintenance	4,265.00	960.66
Social Outreach (Evangelism)	39.99	75.00
Stewardship	599.00	0.00
Summer Ministries	2,613.30	6,903.30
<b>Worship</b>		
Radio Broadcast-Spec Gifts	3,375.00	3,735.00
Worship Exp Pd	2,950.07	2,685.55
<b>Total Worship</b>	<b>6,325.07</b>	<b>6,420.55</b>
<b>Total Programs</b>	<b>18,920.82</b>	<b>19,143.43</b>
<b>Salaries</b>		
Accounting Services	2,750.00	1,500.00
AV Tech	1,890.00	1,855.00
Custodian	8,017.50	7,852.50
Music Personnel	5,800.00	4,900.00
Office Administrator	31,220.00	28,630.00
Payroll Taxes	3,589.96	3,307.69
Quick Books Payroll Fee	180.00	196.00
<b>Senior Pastor</b>		
Cell Phone Stipend	600.00	675.00
Disability & Fees from Portico	219.70	360.84
Group Life	146.38	240.60
Housing	25,000.08	45,917.81
Housing Pastoral Rent	9,000.00	9,000.00

5:29 PM  
01/14/26  
Cash Basis

**Christ Lutheran Church**  
**Revenue vs Expense**  
**January through December 2025**

	Jan - Dec 25	Jan - Dec 24
Pension	7,321.60	6,345.71
Portico Health/Dental Insurance	13,885.53	14,734.56
SECA Allowance	4,803.12	4,509.36
Senior Pastor Auto	1,759.61	1,735.37
Sr. Pastor Continuing Ed.	1,539.57	1,016.64
Wages	37,781.04	13,295.31
<b>Total Senior Pastor</b>	<b>102,056.63</b>	<b>97,831.20</b>
Supply Pastor		
Supply Pastor	1,050.00	825.00
Supply Pastors Mileage	242.20	238.52
<b>Total Supply Pastor</b>	<b>1,292.20</b>	<b>1,063.52</b>
Worker's Compensation Insurance	1,222.02	1,320.00
<b>Total Salaries</b>	<b>158,018.31</b>	<b>148,455.91</b>
<b>Total Expense</b>	<b>277,884.15</b>	<b>252,285.39</b>
<b>Net Ordinary Income</b>	<b>-31,971.23</b>	<b>88,325.01</b>
Other Income/Expense		
Other Expense		
WoCL Expenses		
Craft & Bake Sale Expenses	961.48	621.24
WoCL Benevolence	2,515.00	0.00
WoCL Expenses - Other	1,415.43	3,201.02
<b>Total WoCL Expenses</b>	<b>4,891.91</b>	<b>3,822.26</b>
<b>Total Other Expense</b>	<b>4,891.91</b>	<b>3,822.26</b>
<b>Net Other Income</b>	<b>-4,891.91</b>	<b>-3,822.26</b>
<b>Net Income</b>	<b>-36,863.14</b>	<b>84,502.75</b>

## Christ Lutheran Church – Annual Meeting Minutes

January 26, 2025

Opening Prayer

Meeting Call to Order

Approval of 2024 Minutes

- Motion to approve by Brad Leathers and 2<sup>nd</sup> by Mary Zimmerman. Motion passed.

Team Reports – packet available for review in the office

- Review of financials. Motion to approve the reports by Randy Hahn and 2<sup>nd</sup> by Susan Grooters. Motion passed.

Elections for 2025

- Church Council, 7 council members – New Members: Dena Mathison, Amanda Heibel. Motion to accept their invitations by Randy Hahn and 2<sup>nd</sup> by Rick Grooters. Motion passed.
- Audit committee: Bradley Leathers and Joel Mielke. Motion by Mike Erdman and 2<sup>nd</sup> by Jennifer Pickett. Motion passed.
- Nominating Committee: Alison Leathers and Susan Pikula. Motion by Diane Johnson and 2<sup>nd</sup> by Rick Grooters. Motion passed.
- 2025 Assembly Delegates: May 30 and 31, 2025 and voting on a bishop. Bev Olson and Traci Corson. Alternate: Bradley Leathers and Carol Solberg. Motion by Bradley Leathers and 2<sup>nd</sup> by Glenn Dale. Motion passed.

Comments by Pastor Kris Kincaid

- Make sure that there is a microphone ready in the basement prior to the annual meeting next year.

Lord's Prayer

Adjournment

Respectfully submitted by Melissa Severson.



#### **CHILDREN YOUTH AND FAMILY MINISTRY COMMITTEE**

The committee shall consist of 5-7 members, including one council representative, and may include a parent of a birth-two-year-old, Sunday School representative (1 adult/1 youth), confirmation representative (1 adult/1 youth), one high school representative, and one young family representative. The Committee shall elect a Chair, Vice Chair, and Recording Secretary.

The Children, Youth and Family Ministry committee at CLC initiates and supports faith formation for children, youth, and families through catechism, building relationships, empowering youth leadership, living out service and generosity, encouraging Cross+generational ministries and celebrating milestones.

**The information below is to be used by the CYF committee, not to be included in the constitution.**

That Committee shall, either corporately or through specifically designated individuals:

1. Establish objectives, set up policies for, and supervise the education programs, i.e. Sunday school, VBS, confirmation, youth and CROSS+Generational ministries
2. Working with the Pastor, review the performance of chosen curriculum for each education group at the end of the year and select curriculum for the following year.
3. Provide recognition of faithful service to persons involved in the Christian education within this congregation.
4. Consider provision of special education opportunities for mentally and physically handicapped persons.
5. Review and provide the Finance Committee Executive Committee with budget needs for the next year, and annually examine inventory, equipment, and education facilities and make any recommendations to the Property Committee. (Finance Committee works on this in September every year. Submit requests to the Church Council which meets the second Wednesday of every month.

#### **Subcommittees As Needed**

Sunday School

VBS

Confirmation

Fundraising

Cross+Gen

#### **Oversee and Coordinate fundraisers such as:**

VBS Camp

Mission Trips

Summer Stretch

ELCA Youth Gatherings

Outdoor Lutheran Ministries

Lock-ins and other Special Events

# CHRIST LUTHERAN CHURCH

## 2026 BUDGET

		Budget 2025	Proposed Budget 2026
<b>Income</b>			
	Contributions Income	\$209,500.00	\$234,267.00
	Craft & Bake Sale Income	\$19,000.00	\$8,000.00
	Income Interest	\$275.00	\$250.00
	Miscellaneous Income	\$1,100.00	\$200.00
	Restricted Contributions	\$3,000.00	\$1,500.00
	Program Fees	\$2,207.00	\$500.00
	Church Maint Receipts	\$500.00	
	Memorial Receipts	\$5,000.00	\$2,000.00
	Thrivent Choice	\$2,900.00	\$3,000.00
	WCFK (kids support fund)	\$200.00	\$ -
	CYF (children, youth, family)	\$2,000.00	\$1,000.00
<b>Total Income</b>		<b>\$256,582.00</b>	<b>\$250,717.00</b>
<b>Expense</b>			
I.	<b>Benevolence</b>		
1	Campus Ministry/ Luther Seminary	\$1,000.00	500/each church \$1,000.00 commitment
4	Dsstr Rlf/Wrld Hngr	\$500.00	\$500.00 church commitment
5	ELCA	\$6,750.00	\$6,820.00 church commitment
6	Food Shelf	\$1,500.00	\$1,500.00 church commitment
7	Good Earth Village	\$2,000.00	\$500.00 church commitment
8	Local/Global	\$4,000.00	\$3,000.00 church commitment
10	Pastoral Discretionary Fund		\$1,000.00
	<b>Total Benevolence</b>	<b>\$17,750.00</b>	<b>\$14,320.00</b>
	<b>Benevolence - Pass Through</b>	Donations/collections above and beyond our church commitment	
	Thrivent Designated Payments	0	\$0.00
	FRB- Global Hope	\$2,400.00	\$0.00
	MPM - Infant Rescue		\$0.00
	Open Hands		\$0.00
	Food Shelf		\$0.00
	Good Earth Village		\$0.00

**II. Operations**

2	Heat-(MN Energy)	\$9,000.00	\$8,400.00
3	Ins - Property	\$8,400.00	\$8,400.00
	Interest Expense	\$ -	\$ -
4	Office	\$10,000.00	\$10,000.00
5	Postage	\$2,000.00	\$2,000.00
6	Property	\$12,000.00	\$12,000.00
7	Synod Assembly/Conference	\$1,250.00	\$1,400.00
8	Telephone/Internet/Website	\$4,000.00	\$4,000.00
9	Elec, Water & Sewer-(PPU)	\$12,000.00	\$15,000.00
10	Kitchen/Fellowshio	\$ -	\$500.00
11	Contract Services		\$1,250.00
	Total Operations	\$59,750.00	\$62,950.00

**III. Programs**

1	Children, Youth, Family	\$1,500.00	\$1,500.00
2	Social Outreach	\$250.00	\$250.00
3	Miscellaneous	\$1,500.00	\$1,500.00
4	Music Sup & Maint	\$2,000.00	\$2,000.00
5	Stewardship	\$500.00	\$750.00
7	Worship	\$3,000.00	\$3,000.00
8	Summer Ministries GEV schol, trips	\$1,000.00	\$2,000.00
	Total Programs	\$12,895.00	\$11,000.00

**IV. Salaries**

1	Custodian	\$8,000.00	\$8,000.00
3	AV Tech	\$2,000.00	\$2,000.00
4	Music Personnel	\$5,500.00	\$5,600.00
5	Payroll Taxes	\$3,400.00	\$3,400.00
6	Supply Pastors & Mileage	\$850.00	\$1,500.00
7	Worker's Comp	\$1,500.00	\$1,500.00
8	Office Admin	\$30,000.00	\$31,000.00
9	Accounting Serv	\$3,000.00	\$3,000.00
10	P/R DD Exp./ quick books	\$310.00	\$310.00
	paid leave		\$1,000.00
	Total Other Salaries		\$57,310.00

**11 Pastor**

	Cell Phone Stipend	\$625.00	\$600.00
a	Disability&Life	\$205.00	\$205.00
b	Group Life	\$140.00	\$140.00
c	Health Ins	\$16,964.00	\$10,000.00



d	Housing	\$25,000.00	\$50,000.00
f	Pension	\$6,759.00	\$7,596.00
g	SECA Allowance	\$4,803.00	\$4,000.00
	Pastor Auto	\$1,750.00	\$2,000.00
h	Pastor Cont Ed.	\$1,600.00	\$1,000.00
i	Wages	\$37,781.00	\$29,596.00
	Total Pastor	\$104,627.00	\$105,137.00
	Total Salaries	\$163,187.00	\$162,447.00
	Total Expense	\$256,582.00	\$250,717.00
	Net Revenue Over (Under) Expense	\$ -	\$0.00

	Altar Guild Receipts	\$1,500.00	\$ 2,000.00
	Altar Guild Expenses	\$1,100.00	\$ 2,000.00
	WOCL Receipt	\$5,000.00	\$ 2,500.00
	WOCL Expenses	\$2,500.00	\$ 2,500.00
	WOCL craft	\$500.00	\$ 700.00

## **NOMINATING COMMITTEE REPORT:**

**For 2026 Church Council (2):**

Andy Bunge

Jonathan Wood

**For Audit Committee (2):**

-----  
-----

**For 2026 Nominating Committee (2):**

-----  
-----

**For 2026 Assembly Delegates (2):**

-----  
-----

**Alternate(s):**

## THROUGH YOUR GENEROSITY, GOD IS AT WORK ACROSS THE ELCA.

### MISSION SUPPORT

A portion of your offering, called Mission Support, advances the ministry of our church, helping the ELCA nurture Christian community, raise up leaders, serve our neighbors and strive for justice.

### ELCA WORLD HUNGER

Part of our church's long tradition of meeting human needs, ELCA World Hunger testifies to our hope for and commitment to God's promise of a time when we will hunger and thirst no more. ELCA World Hunger walks alongside communities in more than 60 countries — including the United States — to create unique solutions to hunger and poverty.

### LUTHERAN DISASTER RESPONSE

Lutheran Disaster Response shares God's hope, healing and renewal with people whose lives have been disrupted by disasters in the United States and around the world. When the dust settles and the headlines change, we stay to provide ongoing assistance to those in need.

### WHERE NEEDED MOST

Where Needed Most supports the powerful ways we work together around the world — supporting leaders, inspiring young people, fueling ministries and championing global mission. Gifts to Where Needed Most support and sustain the people, congregations, synods and ministries working around the world to realize the hope-filled future God promises.



Evangelical  
Lutheran Church  
in America

Sign up to hear more stories of impact from the ELCA churchwide organization at [ELCA.org/subscribe](https://elca.org/subscribe).

Read about Mission Support and learn more at [LivingLutheran.org/SOFIA](https://LivingLutheran.org/SOFIA).